

ZAHA HADID

520 WEST 28TH

PENTHOUSE 37

LEVEL 18 & 20 ELEVATION 105' AND 116'

ROOF TERRACE ELEVATION 130'

Interior: 6,853 Sq. Ft. / 637 Sq. M.

Exterior: 2,552 Sq. Ft. / 237 Sq. M.

5 Bedrooms
6 Baths
Powder Room

Triplex Penthouse
South, East & North Exposures
Direct Elevator Entrance
Private In-Residence Elevator
1,250-square-foot double-corner Great Room with Balcony and Fireplace
Signature Zaha Hadid Sculptural Staircase
Library
Windowed Eat-In Kitchen
2,218-square-foot Wraparound Roof Terrace
Potential Outdoor Kitchen
Corner Master Bedroom Suite with Balcony, Large Dressing Room and Two Bathrooms
Wet Bar
En-Suite Bathrooms in Bedrooms 2, 3, 4 & 5
Two Utility Rooms with Side-by-Side Washer-Dryers and Sinks
Dedicated Service Entrance

RELATED

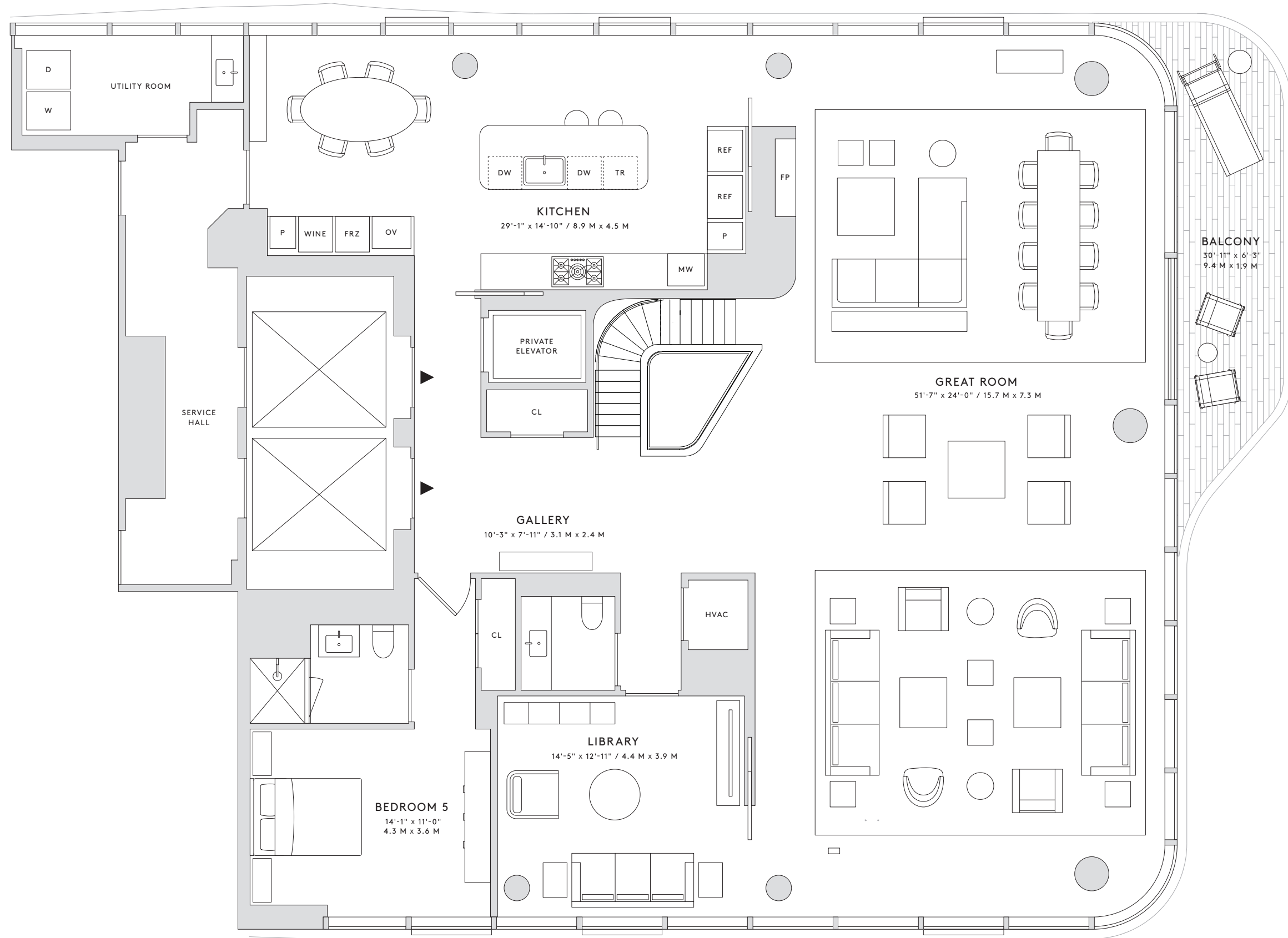
EXCLUSIVE MARKETING & SALES AGENTS:

Related Sales &
Corcoran Sunshine Marketing Group

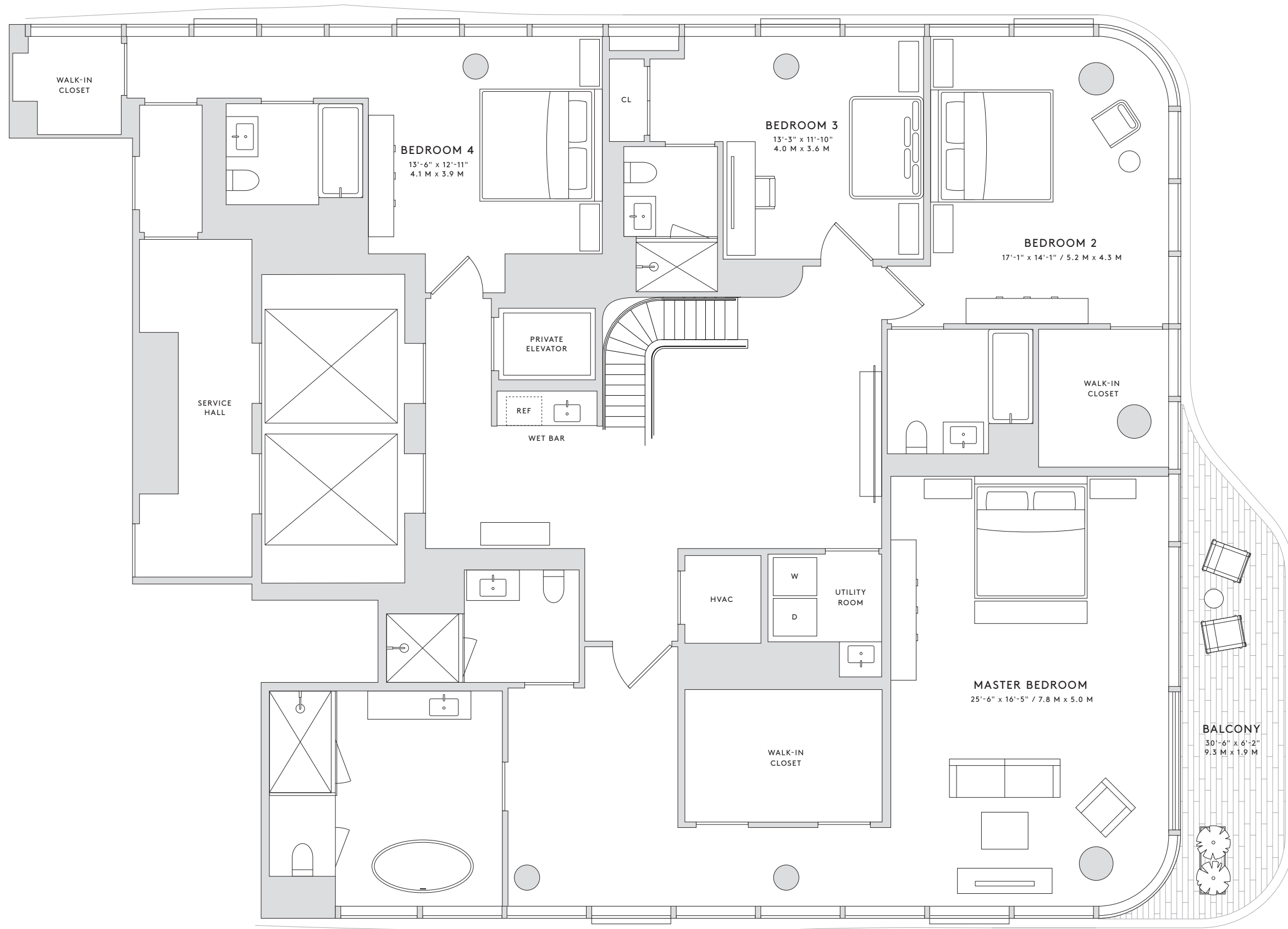
SALES GALLERY

520 West 28th Street
New York, NY 10001
Tel +1 212 502 5528
www.520w28.com

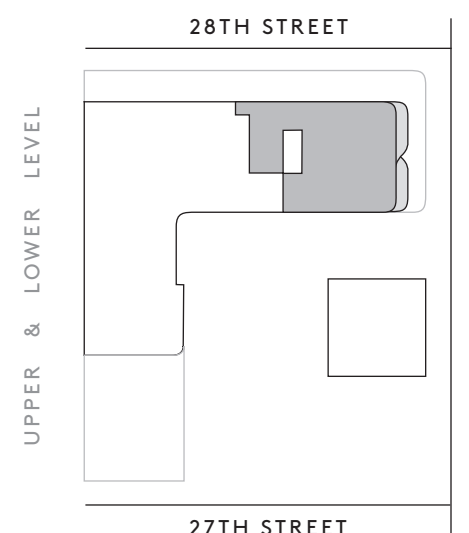
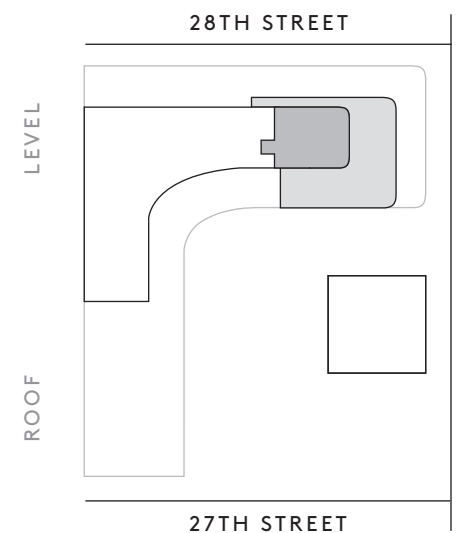
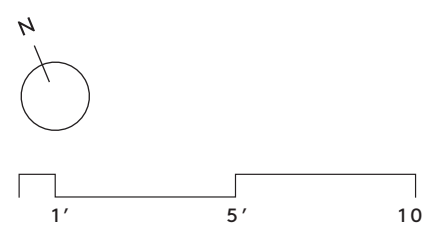
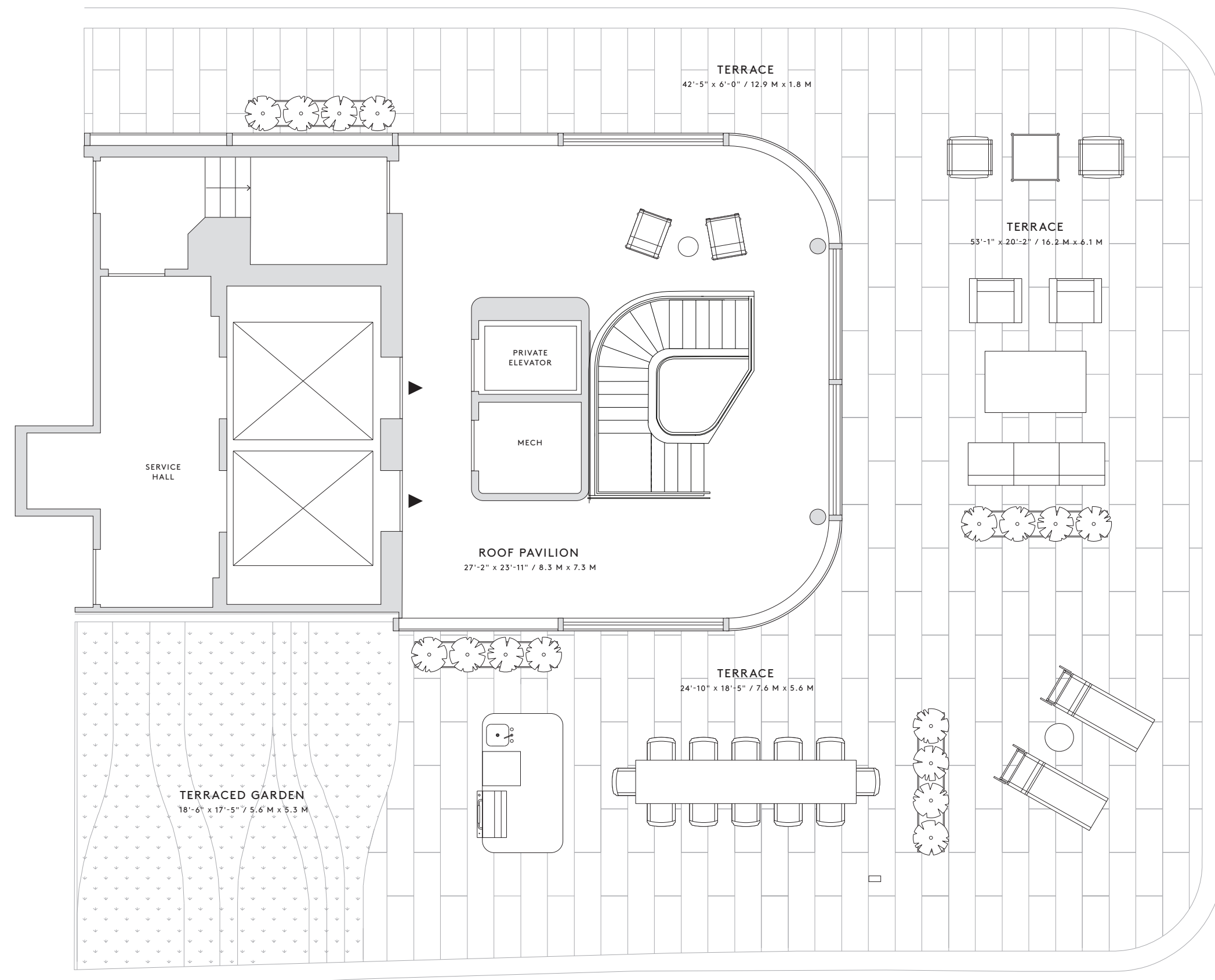
UPPER LEVEL



LOWER LEVEL



ROOF LEVEL



All dimensions are approximate and subject to normal construction variances and tolerances. Plans and dimensions may contain minor variations from floor to floor. The square footage on this floor plan exceeds the usable square footage. The complete offering terms are in an Offering Plan available from Sponsor, File No. CD14-0111. Sponsor: 28th Highline Associates, L.L.C., c/o The Related Companies, L.P., 60 Columbus Circle, New York, New York 10023. Property Address: 520 West 28th Street, New York, New York 10001. Sponsor reserves the right to make changes in accordance with the terms of the Offering Plan.